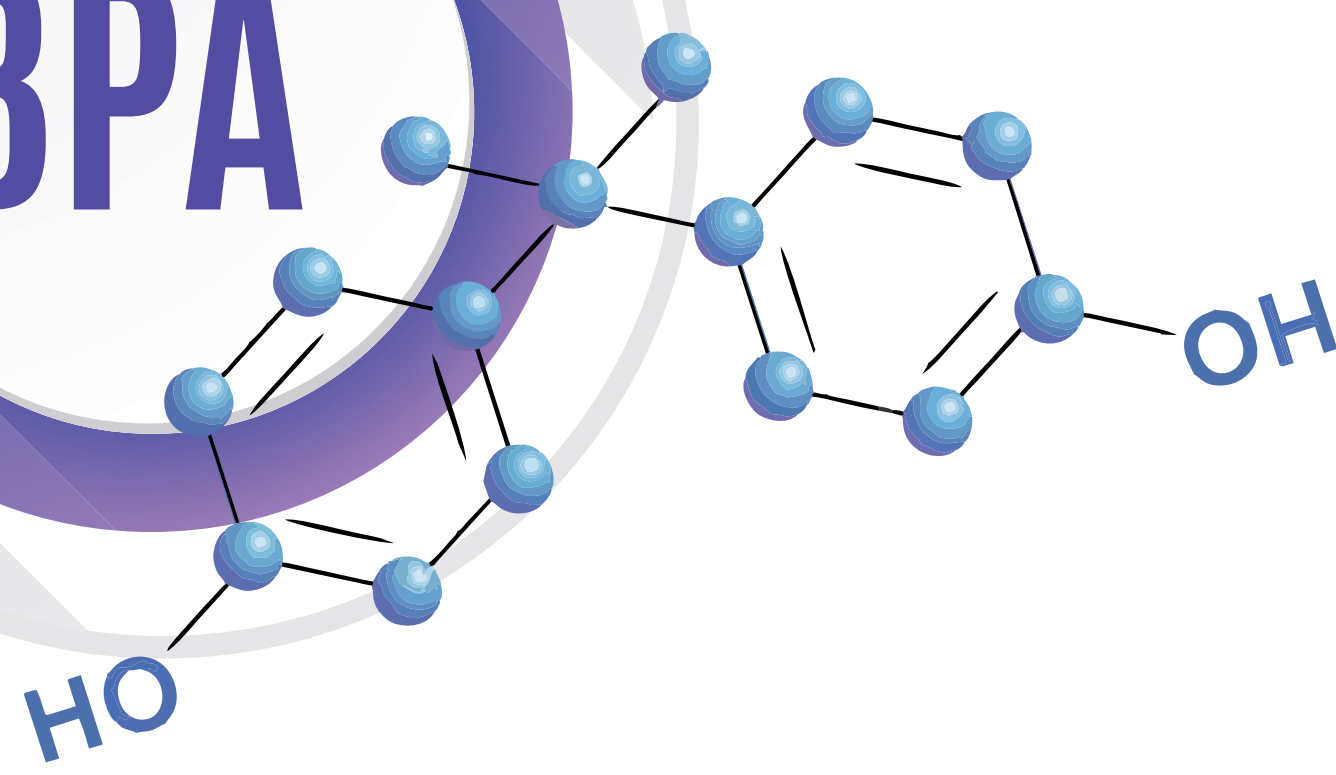


BISPHENOLA

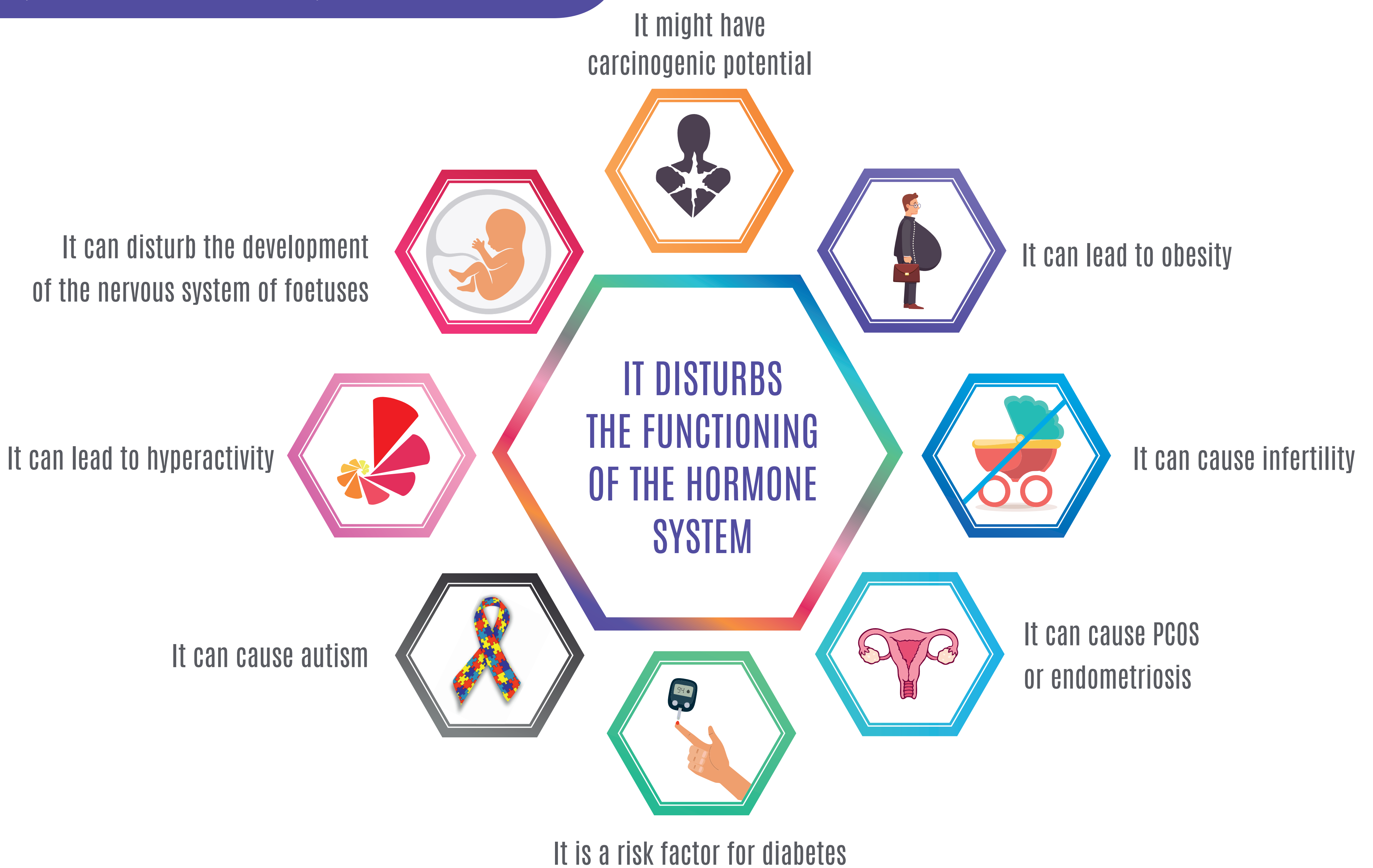
BPA



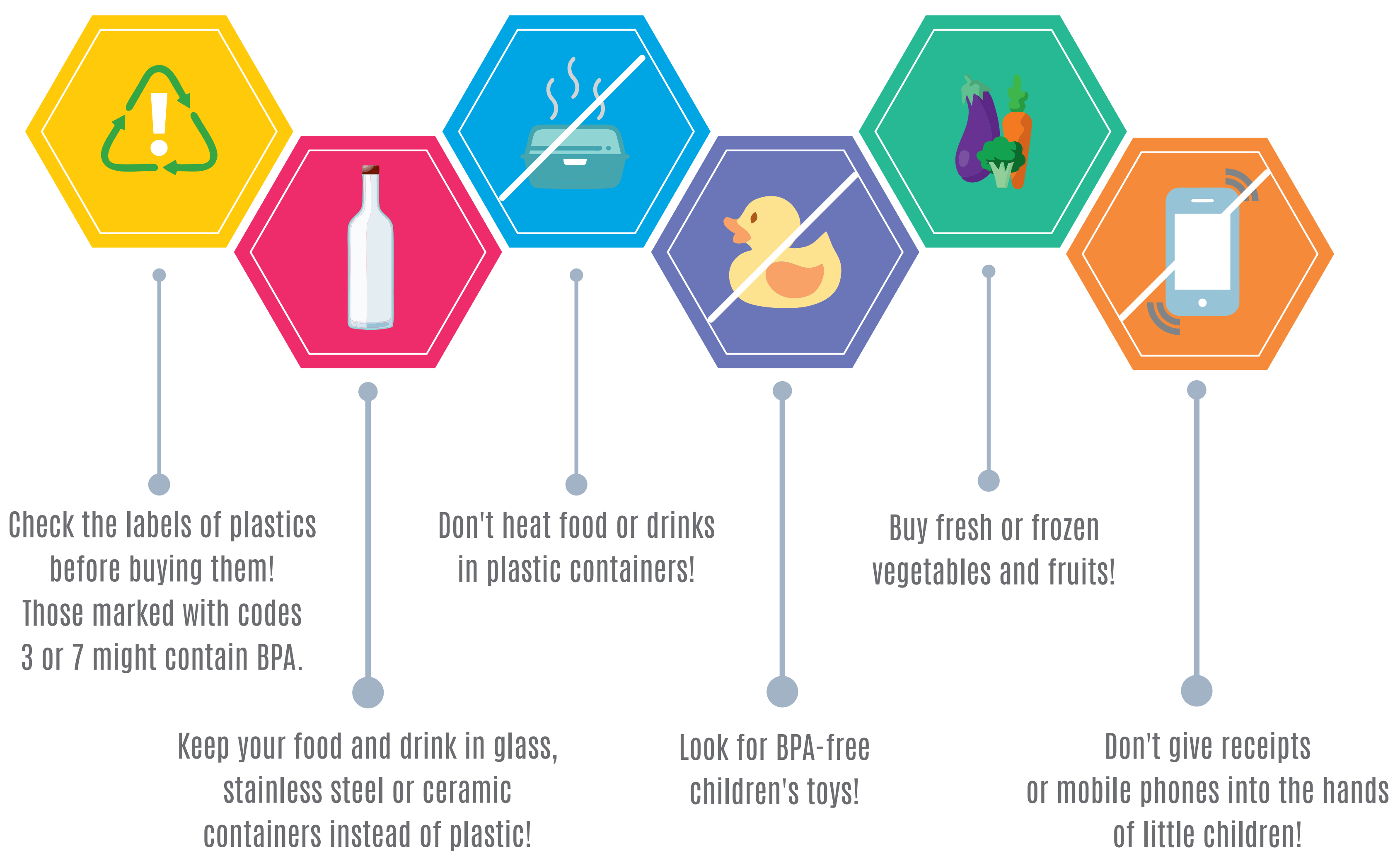
BPA IS A SYNTHETIC COMPOUND USED IN THE PRODUCTION OF POLYCARBONATE PLASTICS AND EPOXY RESINS. IT CAN BE FOUND IN PLASTIC FOOD CONTAINERS, THE INSIDES OF TIN CANS AND CANNED BEVERAGES, ON THE METAL LIDS OF MASON JARS, PLASTIC GLASSES AND CUTLERY, FLASKS, TOYS, ELECTRONIC PRODUCTS.

ADVERSE HEALTH EFFECTS

BPA, TOGETHER WITH OTHER FACTORS, MAY HARM HUMAN HEALTH.



ADVICE FOR AVOIDING BPA



science and policy
for a healthy future

National Public Health Center, Hungary